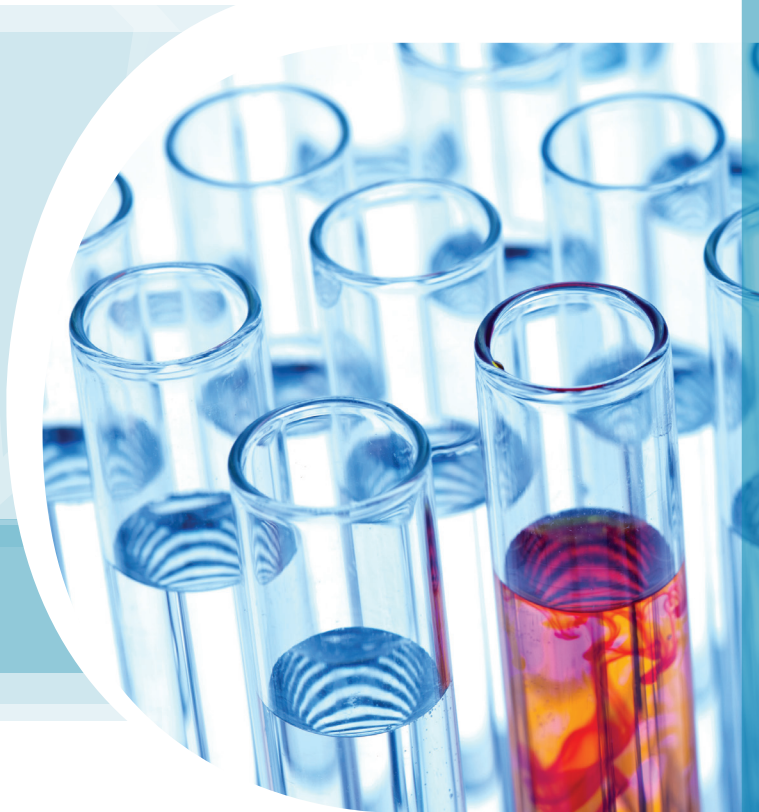


Living Donor

SPECIMEN GUIDE



Test Number	Test Name	Specimen Volume	Preferred Specimen Type(s)	Preferred Collection Tube(s)	Specimen Viability
139670	ABO/Rh	2 mL	Whole blood	EDTA plasma (lavender-top)	5 days at 2°-8°C
138662	Cytomegalovirus Total Antibody	1 mL	Serum Plasma	EDTA plasma (lavender-top) Plain (red-top)	7 days at 2°-8°C or freeze at ≤-20°C
138697	Cytomegalovirus Total With Reflex to IgM	1 mL	Plasma and serum	EDTA plasma (lavender-top) Plain (red-top)	7 days at 2°-8°C or freeze at ≤-20°C
138930	Cytomegalovirus Total With Reflex to IgM and IgG	1 mL	Plasma and serum	EDTA plasma (lavender-top) Plain (red-top)	7 days at 2°-8°C or freeze at ≤-20°C
138828	<i>C trachomatis</i> / <i>N gonorrhoeae</i> NAA	2 mL urine in APTIMA® urine specimen transport tube 1 APTIMA® swab	APTIMA® urine specimen transport tube APTIMA® swab	APTIMA® urine specimen transport tube (Raw urine must be transferred to collection transport tube within 24 hours of collection.) 1 urethral swab (male) in APTIMA® unisex swab collection kit 1 endocervical swab (female) in APTIMA® unisex swab collection kit.	APTIMA® urine: Within 30 days at room temperature or refrigerated temperature (2°-30°C). Additionally, urine can be stored up to 12 months at -20° to -70°C. APTIMA® swab: Within 60 days at room temperature or refrigerated temperature (2°-30°C). Additionally, swab can be stored up to 12 months (6 months for urethral swab) at -20° to -70°C.
138699	Hepatitis B Core Antibody, Total	2 mL	Serum Plasma	EDTA plasma (lavender-top) Plain (red-top)	30°C or colder for up to 7 days, 14 days at 2°-8°C or freeze at ≤-20°C
138979	Hepatitis B Core Total With Reflex to IgM	2 mL	Serum Plasma	EDTA plasma (lavender-top) Plain (red-top)	30°C or colder for up to 7 days, 14 days at 2°-8°C or freeze at ≤-20°C
138874	Hepatitis B Surface Antigen	2 mL	Serum Plasma	EDTA plasma (lavender-top) Plain (red-top)	30°C or colder for up to 7 days, 14 days at 2°-8°C or freeze at ≤-20°C
138749	Hepatitis B Surface Antigen With Reflex to Neutralization	2 mL	Serum Plasma	EDTA plasma (lavender-top) Plain (red-top)	30°C or colder for up to 7 days, 14 days at 2°-8°C or freeze at ≤-20°C
138907	Hepatitis C Antibody	2 mL	Serum Plasma	EDTA plasma (lavender-top) Plain (red-top)	30°C or colder for up to 7 days, 14 days at 2°-8°C or freeze at ≤-20°C
138948	HIV-1/HIV-2 PLUS O Antibody Screen	2 mL	Serum Plasma	EDTA plasma (lavender-top) Plain (red-top)	30°C or colder for up to 7 days, 14 days at 2°-8°C or freeze at ≤-20°C
138931	HIV-1/HIV-2 PLUS O Antibody Screen With Reflex to HIV-1 Western Blot	2 mL	Serum Plasma	EDTA plasma (lavender-top) Plain (red-top)	30°C or colder for up to 7 days, 14 days at 2°-8°C or freeze at ≤-20°C
138981	HIV-1 Antibody Western Blot	0.2 mL	Serum Plasma	EDTA plasma (lavender-top) Plain (red-top)	7 days at 2°-8°C or freeze at ≤-20°C
139783	HIV/HCV/HBV NAT	2 mL whole blood 1 mL plasma or serum	Whole blood Plasma Serum	EDTA whole blood (lavender-top) EDTA plasma (lavender-top) PPT (plasma preparation tube) Plain (red-top)	Blood collected in EDTA or PPT may be stored for up to 12 days with the following conditions: • Samples must be centrifuged within 72 hours of draw. • For storage above 8°C, samples may be stored for 72 hours at up to 25°C, and up to 30°C for 24 hours during the 72 hours. Other than noted above, samples are stored at 2°-8°C. In addition, PPT plasma and serum separated from the cells may be stored for up to 30 days at ≤-18°C and EDTA plasma separated from the cells may be stored for up to 6 months at ≤-18°C.
138922	HTLV-I/II Antibody	2 mL	Serum Plasma	Plain (red-top) EDTA plasma (lavender-top)	30°C or colder for up to 7 days, 14 days at 2°-8°C or freeze at ≤-20°C
138780	HTLV-I/II Antibody With Reflex to Immunoblot	2 mL	Serum Plasma	Plain (red-top) EDTA plasma (lavender-top)	7 days at 2°-8°C or freeze at ≤-20°C
138984	HTLV-I/II Immunoblot	0.5 mL	Serum Plasma	Plain (red-top) EDTA plasma (lavender-top)	7 days at 2°-8°C or freeze at ≤-20°C
139693	Syphilis (<i>T pallidum</i>)	2 mL	Serum	Plain (red-top)	5 days at 2°-8°C or freeze at ≤-20°C
139290	<i>T cruzi</i> (Chagas) Antibody	2 mL	Serum Plasma	Plain (red-top) EDTA plasma (lavender-top)	Living donor specimens at 2°-8°C or frozen for up to 14 days or 30°C or colder for up to 7 days (inclusive of shipping time). Storage at a combination of these temperatures may not exceed 14 days.

Test Number	Test Name	Specimen Volume	Preferred Specimen Type(s)	Preferred Collection Tube(s)	Specimen Viability
139806	West Nile Virus NAT	2 mL whole blood 1 mL plasma	Whole blood Plasma	EDTA plasma (lavender-top) PPT (plasma preparation tube)	Whole blood or plasma may be stored for up to 72 hours from time of draw at 2°-25°C; temperatures not to exceed 30°C are acceptable for no more than 24 hours. Plasma separated from cells within 72 hours of collection, stable for up to 12 days refrigerated, and up to 30 days frozen.
139828	Zika Virus NAT	2 mL whole blood 1 mL plasma	Whole blood Plasma	EDTA plasma (lavender-top) PPT (plasma preparation tube)	Whole blood, anticoagulated: Up to 72 hours at ≤25°C, not to exceed 30°C for more than 24 hours. Plasma: Collected in EDTA or PPT and separated within 72 hours may be stored up to 5 days at 2°-8°C. Frozen plasma: ≤-18°C for up to 30 days

Donor Screening Panels

Test Number	Test Name	Specimen Volume	Preferred Specimen Type(s)	Preferred Collection Tube(s)	Specimen Viability
139060	FDA Female, No Reflex HBsAg, HBcore Total, HCV, HIV-1/HIV-2 PLUS O, Syphilis (<i>T pallidum</i>), CT/NG NAA, HIV/HCV/HBV NAT	2.5 mL serum 3 mL plasma 2 mL urine in APTIMA® urine specimen transport tube (fill between the black lines) or 1 APTIMA® swab	Serum Whole blood or plasma Urine or swab	Plain (red-top) EDTA whole blood or EDTA plasma (lavender-top) APTIMA® urine specimen transport tube (Raw urine must be transferred to collection transport tube within 24 hours of collection) or 1 endocervical swab in APTIMA® unisex swab collection kit	See individual tests
139061	FDA Female, With Reflex HBsAg With Reflex to Neutralization, HBcore Total With Reflex to IgM, HCV, HIV-1/HIV-2 PLUS O With Reflex to HIV-1 WB, Syphilis (<i>T pallidum</i>), CT/NG NAA, HIV/HCV/HBV NAT	3.8 mL serum 3 mL plasma 2 mL urine in APTIMA® urine specimen transport tube (fill between the black lines) or 1 APTIMA® swab	Serum Whole blood or plasma Urine or swab	Plain (red-top) EDTA whole blood or EDTA plasma (lavender-top) APTIMA® urine specimen transport tube (Raw urine must be transferred to collection transport tube within 24 hours of collection) or 1 endocervical swab in APTIMA® unisex swab collection kit	See individual tests
139062	FDA Male, No Reflex HBsAg, HBcore Total, HCV, HIV-1/HIV-2 PLUS O Syphilis (<i>T pallidum</i>), HTLV-I/II, CMV Total, CT/NG NAA, HIV/HCV/HBV NAT	4.7 mL serum 3.2 mL plasma 2 mL urine in APTIMA® urine specimen transport tube (fill between the black lines) or 1 APTIMA® swab	Serum Whole blood or plasma Urine or swab	Plain (red-top) EDTA whole blood or EDTA plasma (lavender-top) APTIMA® urine specimen transport tube (Raw urine must be transferred to collection transport tube within 24 hours of collection) or 1 urethral swab in APTIMA® unisex swab collection kit	See individual tests
139063	FDA Male, With Reflex HBsAg With Reflex to Neutralization, HBcore Total With Reflex to IgM, HCV, HIV-1/HIV-2 PLUS O With Reflex to HIV-1 WB, Syphilis (<i>T pallidum</i>), HTLV-I/II With Reflex to Immunoblot, CMV Total With Reflex to IgM, CT/NG NAA, HIV/HCV/HBV NAT	6.0 mL serum 3.2 mL plasma 2 mL urine in APTIMA® urine specimen transport tube (fill between the black lines) or 1 APTIMA® swab	Serum Whole blood or plasma Urine or swab	Plain (red-top) EDTA whole blood or EDTA plasma (lavender-top) APTIMA® urine specimen transport tube (Raw urine must be transferred to collection transport tube within 24 hours of collection) or 1 urethral swab in APTIMA® unisex swab collection kit	See individual tests

Refrigerated specimens are to be maintained at 2°C – 8°C and frozen specimens at minus 20°C or colder unless otherwise specified. Unless explicitly stated otherwise in the package insert, frozen samples that have been stored longer than 6 months after their collection date will not be accepted.

For current specimen requirements, please call ViroMed account management at 800-582-0077 or e-mail ViroMed_AcctMgmt@labcorp.com.

Effective February 2019

Test Number	Test Name	Specimen Volume	Preferred Specimen Type(s)	Preferred Collection Tube(s)	Specimen Viability
139323	Donor Screening Panel 134 FDA Female With WNV, No Reflex HBsAg, HBcore Total, HCV, HIV-1/HIV-2 PLUS O, Syphilis (<i>T pallidum</i>), CT/NG NAA, HIV/HCV/HBV NAT, WNV NAT	2.5 mL serum 4 mL plasma 2 mL urine in APTIMA® urine specimen transport tube (fill between the black lines) or 1 APTIMA® swab	Serum Whole blood or plasma Urine or swab	Plain (red-top) EDTA whole blood or EDTA plasma (lavender-top) APTIMA® urine specimen transport tube (Raw urine must be transferred to collection transport tube within 24 hours of collection) or 1 endocervical swab in APTIMA® unisex swab collection kit	See individual tests
139472	FDA Female With WNV, With Reflex HBsAg With Reflex to Neutralization, HBcore Total With Reflex to IgM, HCV, HIV-1/HIV-2 PLUS O With Reflex to HIV-1 WB, Syphilis (<i>T pallidum</i>), CT/NG NAA, HIV/HCV/HBV NAT, WNV NAT	3.8 mL serum 4 mL plasma 2 mL urine in APTIMA® urine specimen transport tube (fill between the black lines) or 1 APTIMA® swab	Serum Whole blood or plasma Urine or swab	Plain (red-top) EDTA whole blood or EDTA plasma (lavender-top) APTIMA® urine specimen transport tube (Raw urine must be transferred to collection transport tube within 24 hours of collection) or 1 endocervical swab in APTIMA® unisex swab collection kit	See individual tests
139496	FDA Male With WNV, With Reflex HBsAg With Reflex to Neutralization, HBcore Total With Reflex to IgM, HCV, HIV-1/HIV-2 PLUS O With Reflex to HIV-1 WB, Syphilis (<i>T pallidum</i>), HTLV-I/II With Reflex to Immunoblot, CMV Total With Reflex to IgM, CT/NG NAA, HIV/HCV/HBV NAT, WNV NAT	6.0 mL serum 4.2 mL plasma 2 mL urine in APTIMA® urine specimen transport tube (fill between the black lines) or 1 APTIMA® swab	Serum Whole blood or plasma Urine or swab	Plain (red-top) EDTA whole blood or EDTA plasma (lavender-top) APTIMA® urine specimen transport tube (Raw urine must be transferred to collection transport tube within 24 hours of collection) or 1 endocervical swab in APTIMA® unisex swab collection kit	See individual tests
139506	FDA Male With WNV, No Reflex HBsAg, HBcore Total, HCV, HIV-1/HIV-2 PLUS O Syphilis (<i>T pallidum</i>), HTLV-I/II, CMV Total, CT/NG NAA, HIV/HCV/HBV NAT, WNV NAT	4.7 mL serum 4.2 mL plasma 2 mL urine in APTIMA® urine specimen transport tube (fill between the black lines) or 1 APTIMA® swab	Serum Whole blood or plasma Urine or swab	Plain (red-top) EDTA whole blood or EDTA plasma (lavender-top) APTIMA® urine specimen transport tube (Raw urine must be transferred to collection transport tube within 24 hours of collection) or 1 endocervical swab in APTIMA® unisex swab collection kit	See individual tests

Refrigerated specimens are to be maintained at 2°C – 8°C and frozen specimens at minus 20°C or colder unless otherwise specified. Unless explicitly stated otherwise in the package insert, frozen samples that have been stored longer than 6 months after their collection date will not be accepted.

For current specimen requirements, please call ViroMed account management at 800-582-0077 or e-mail ViroMed_AcctMgmt@labcorp.com.

Effective February 2019

ViroMed provides a validated shipping kit for specimens being transported to ViroMed for testing.



ViroMed Laboratories
1447 York Court
Burlington, NC 27215

800-582-0077
ViroMed_AcctMgmt@LabCorp.com
www.ViroMed.com